

Parkheath

Sold on Service

Priory Road NW6

£4,500 PCM (£1,038 per week) - Camden Band F



Exceptional three double bedroom duplex apartment

South Hampstead Conservation Area

Private entrance and excellent natural light

Large kitchen/dining room ideal for entertaining

EPC: TBC

West Hampstead Office 020 7794 7111

1,704 sq ft / 158.3 sq m of internal space

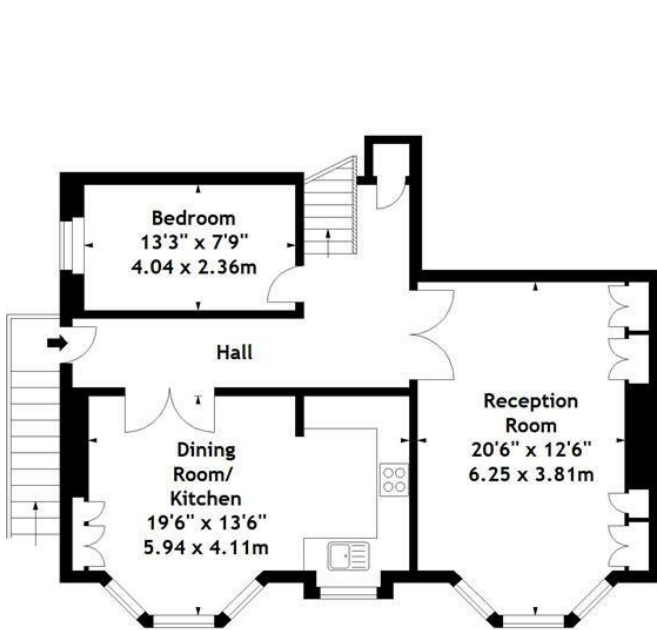
1st and 2nd floors of a double-fronted period conversion

Elegant reception room with bay window and wood flooring

3 bathrooms (2 en suite)

Council Tax: Camden, band F

Priory Road, NW6
 Approx. Gross Internal Area
 1704 Sq Ft - 158.3 Sq M



First Floor



Second Floor

This plan is for layout guidance only. Not drawn to scale unless stated.
 Windows & door openings are approximate. Whilst every care is taken in the preparation of
 this plan, please check all dimensions, shapes & compass bearings before making any
 decisions reliant upon them. © Datography 2016

The particulars do not constitute part of an offer or contract. The particulars, including text, photographs and plans, are for the guidance only of prospective purchasers/tenants and must not be relied upon as statements of fact. The descriptions provided therein represent the opinion of the author and whilst given in good faith should not be construed as statements of fact. Nothing in these particulars shall be deemed a statement that the property is in good condition or otherwise or that any services or facilities are in good working order. All measurements are approximate